

\*FREE SHIPPING ON ORDERS OVER \$98 (EXCLUSIONS APPLY)



SHOP BY VEHICLE



CONTACT & SUPPORT



0

## CONTACT US



### S&B AI AGENT

(Order Status, Knowledge Base, & more)



### TEXT

(909) 947-0015



**EMAIL** customerservice@sbfilters.com



### CALL

(909) 947-0015

Available from Monday 6AM (PST)

## BEFORE YOU START

Kit may not fit with the following Aftermarket Parts installed:

Body Lift or Lowering Kit

Custom Hood

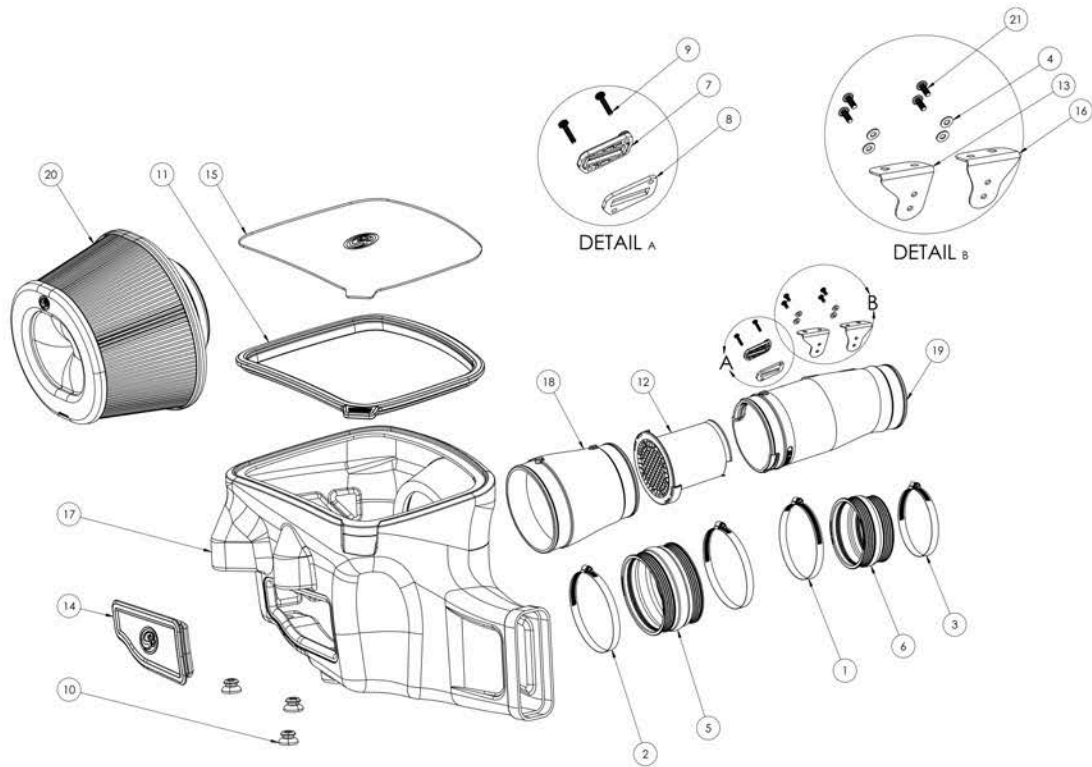
Aftermarket Turbocharger and/or Throttle Body Spacer

## REQUIRED TOOLS

- 10 & 14mm Socket and/or Wrench
- Flat Blade Screwdriver
- Philips Screwdriver
- T20 Torx
- Utility Knife
- 5/16" Nut Driver
- Body Panel Popper (optional)
- Wire Cutters

\*Click [here](#) to **watch** the install instead!\*

- Please read the entire product guide before proceeding.
- Ensure all parts are present.
- If you are missing any of the components, call our customer support at (909) 947-0015.
- Do not work on your vehicle while the engine is hot.
- Make sure the engine is turned off and the vehicle is in Park or the Parking Brake is set.



ITEM NO.	PART NUMBER	DESCRIPTION	QTY.
1	AG1009-00	Hose Clamp, #72	1
2	AG1010-00	Hose clamp, #80	2
3	AG1018-00	Hose Clamp, #64	1
4	AI1226-00	Flat Washer, #10 Screw	4
5	AI1338C-00	Hump Coupler, 5.00" ID x 3.00"	1
6	AI1542C-00	Coupler, 4.19" ID x 3.90" ID x 2.28"	1
7	AI1822-00	MAF Mount, Black	1
8	AI1823-00	Maf Gasket	1
9	AI1837-00	Screw, Pan Head, Phillips, #8-32 X 3/4, SS	2
10	AI2375C-00	Air Box Mounting Grommet	4
11	AI3634C-00	Snap in lid seal	1
12	AI3638-00	Air Straightener Insert	1
13	AI3639-00	Bracket Intake Box side	1
14	AI3641C-00	Box Plug	1
15	AI3642-00	Clear Lid	1
16	AI3711-00	Bracket Throttle Body side	1
17	AI1526B-00	Intake Box	1
18	AI1527-00	Tube Intake Box Side	1
19	AI1528-00	Tube Throttle Body Side	1
20	KF-1117A	Air Filter	1
21	AI1215-00	Stainless Steel Pan Head Phillips Screw	4

## STEP 1:

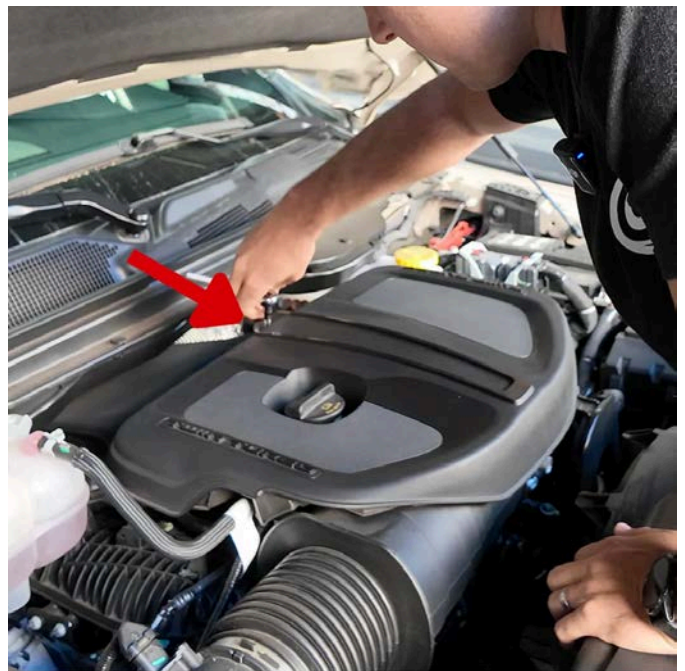
Disconnect the negative battery cable by loosening the terminal clamp and removing it from the battery post.

**IMPORTANT:** Failure to disconnect the battery for a minimum of 2 hours may cause the Check Engine Light to illuminate upon completion of the installation or subsequent operation. **DO NOT SKIP THIS STEP!**

## STEP 2:

Remove the engine cover by unbolting the single bolt located at the rear of the cover. Once done, lift and pull the engine cover off the mounting tabs.

**Tip:** You will need a **14mm Socket** to remove the bolt.

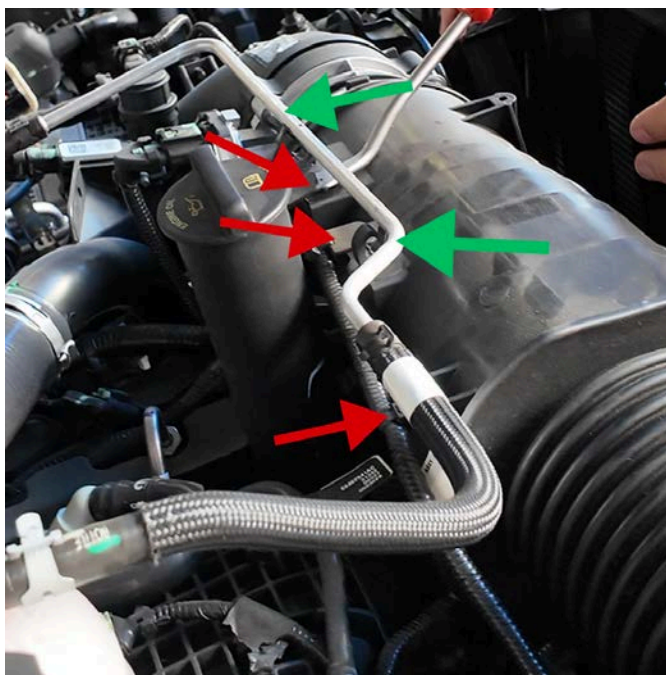


### STEP 3A:

First, remove the coolant line at the points marked by green arrows. (Caution: This line may still be **HOT**)

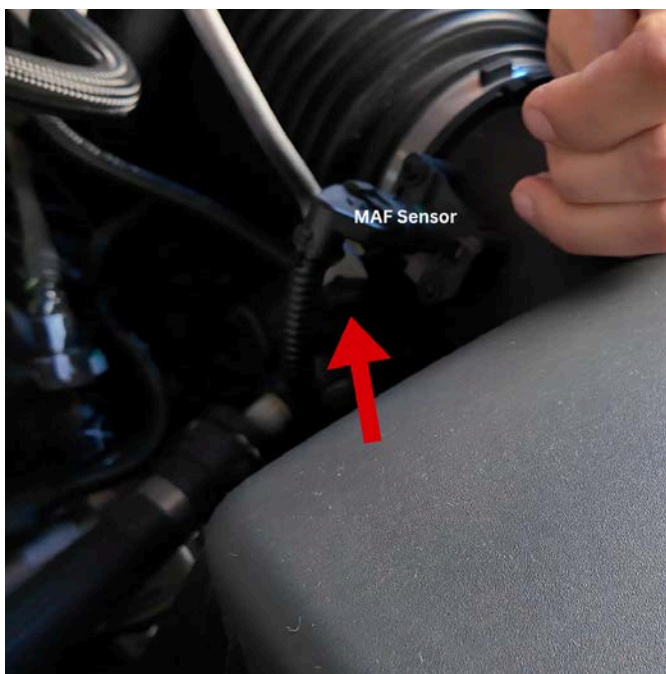
Next, remove the plastic clips at the points marked by red arrows. There will be **three** in total.

**Tip:** We recommend using a body panel tab remover or flat head screw driver to remove the clips.



### STEP 3B:

Before you remove the MAF sensor, there is one more tab to remove and it is located just below the MAF sensor.



## STEP 4:

Disconnect the MAF sensor & place it somewhere safe as you will need it later in the install.



## STEP 5:

Loosen the hose clamp(s) on the throttle body side of the intake tube.

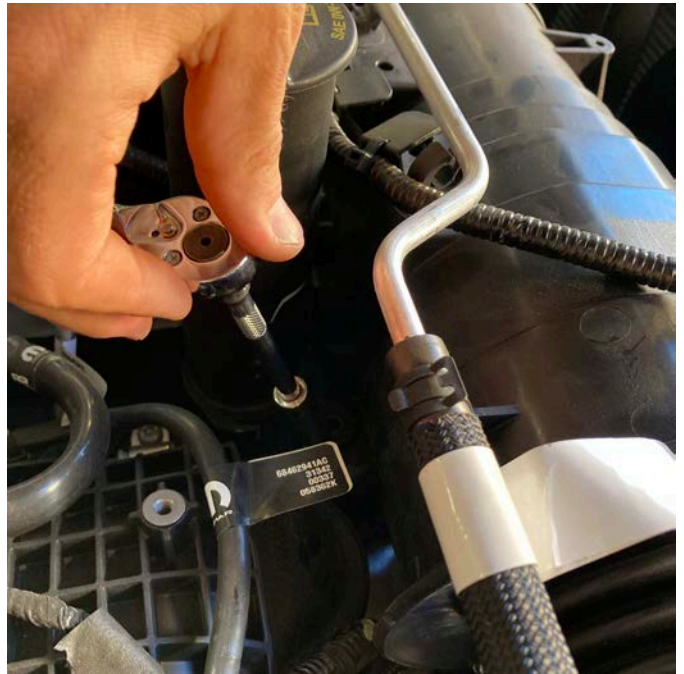
**Tip:** You will need a **5/16** nut driver or socket to remove this.



## STEP 6:

Remove the bolt holding down the intake tube, located next to the oil fill tube.

**Tip:** You will need a **10mm** socket to remove this.



## **STEP 7:**

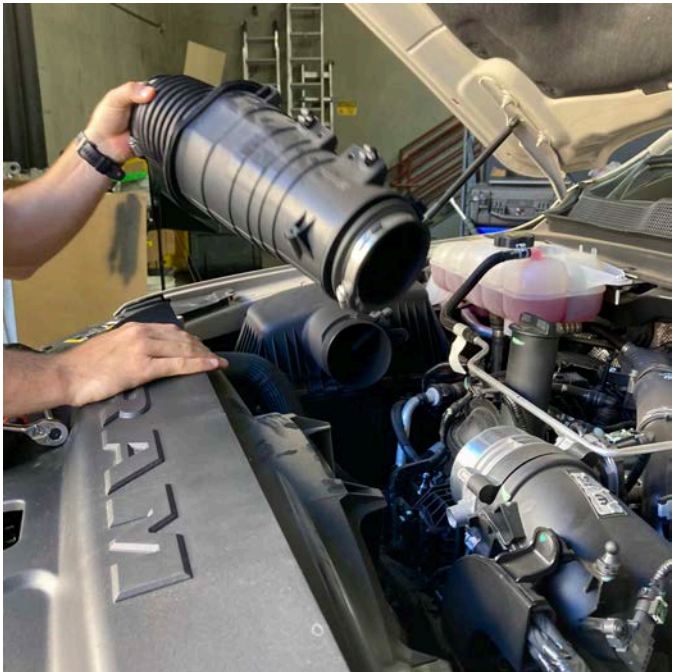
Loosen the hose clamp on the air box side of the stock intake tube.

**Tip:** You will need a **5/16** nut driver.



**STEP 8:**

Remove the stock intake tube.



**STEP 9:**

Pull up on the stock air box to remove it from the engine bay.



## STEP 10:

Remove the stock intake scoop. This is located in front of where the stock air box was located.



## STEP 11:

Remove the **two** clips from your stock intake tube as you will need these later.

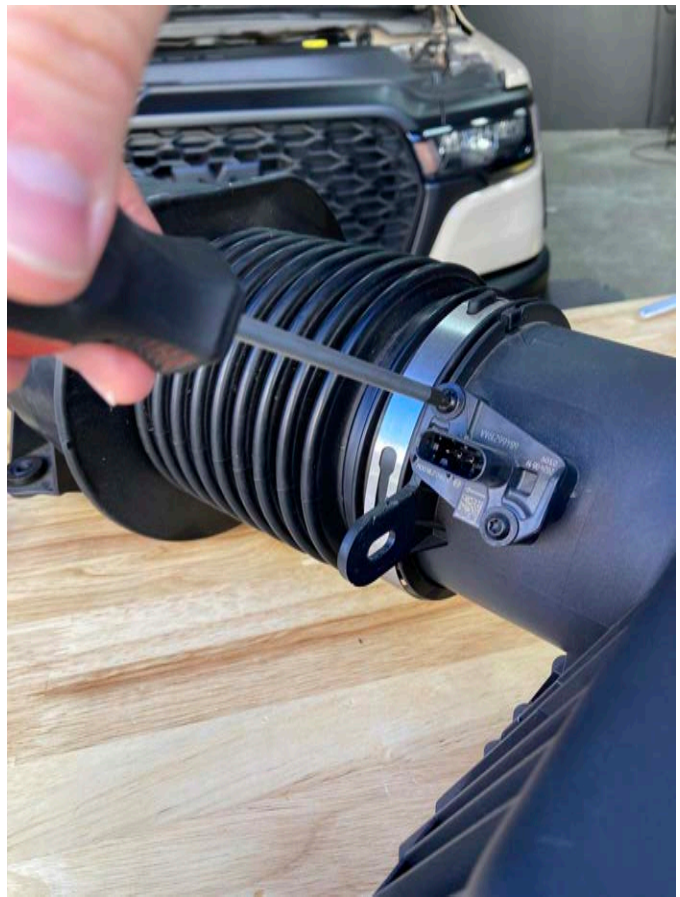
**Tip:** To remove these clips, turn and pull until it pops out of it's mounting location.



## STEP 12:

Remove the MAF sensor from the stock intake tube.

**Tip:** You will need a **T20** Torx. Additionally, you will not need the OEM screws as we have supplied you will longer screws.



## STEP 13:

Assemble the MAF Sensors gasket and spacer as shown to the right.

**Order:** MAF Sensor, Spacer, Gasket

**Tip:** Ensure that the two mounting holes are lined up across the 3 components before installation.



## STEP 14:

Install the MAF sensor onto the S&B Intake tube.

**Tip:** You will need a Phillips screwdriver for this step.



## STEP 15:

Install the MAF insert into the intake tube.



## STEP 16:

Install the two brackets onto the S&B intake tube.

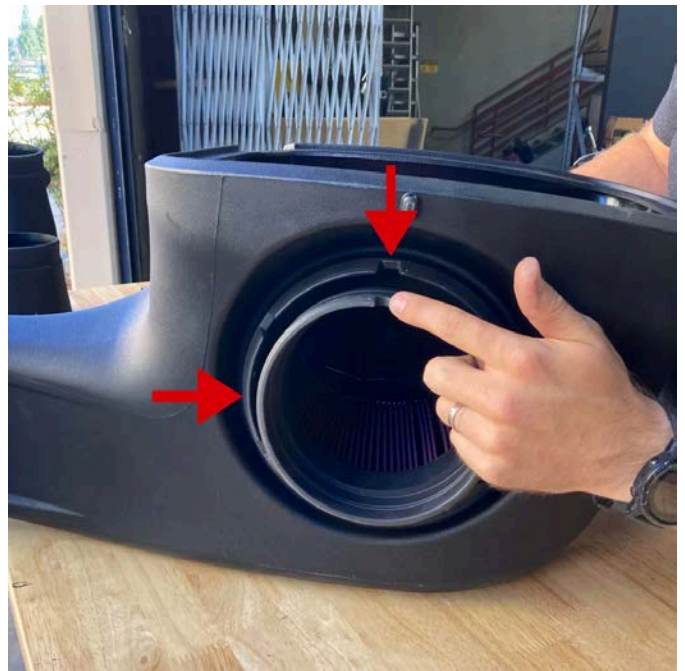
**Tip:** Ensure that the vertical holes are in the middle as shown in the picture.

**Tip:** You will need a phillips screwdriver to complete this step.



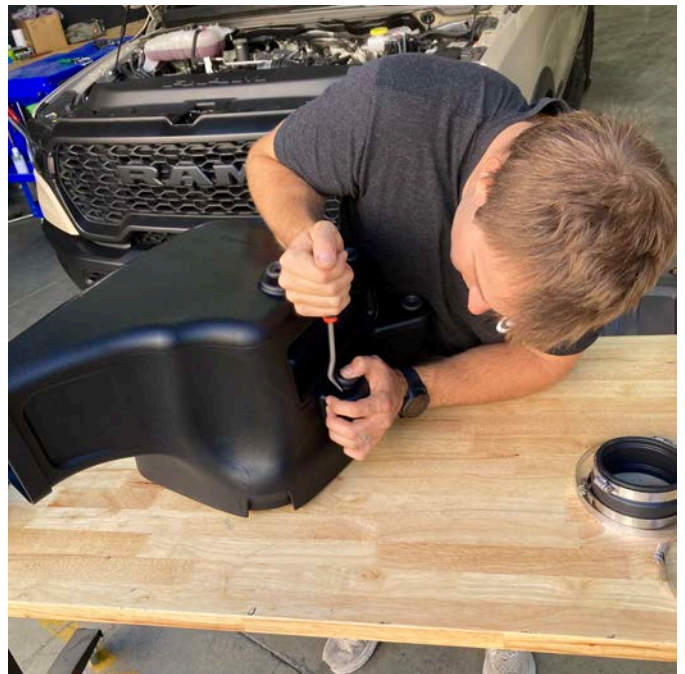
## STEP 17:

Install the S&B air filter into the air box. Ensure the S&B logo on the flat side of the filter is orientated at the 12 o'clock position of the air box. Then pull the air filter until the silicone flange wraps around the outlet of the air box.



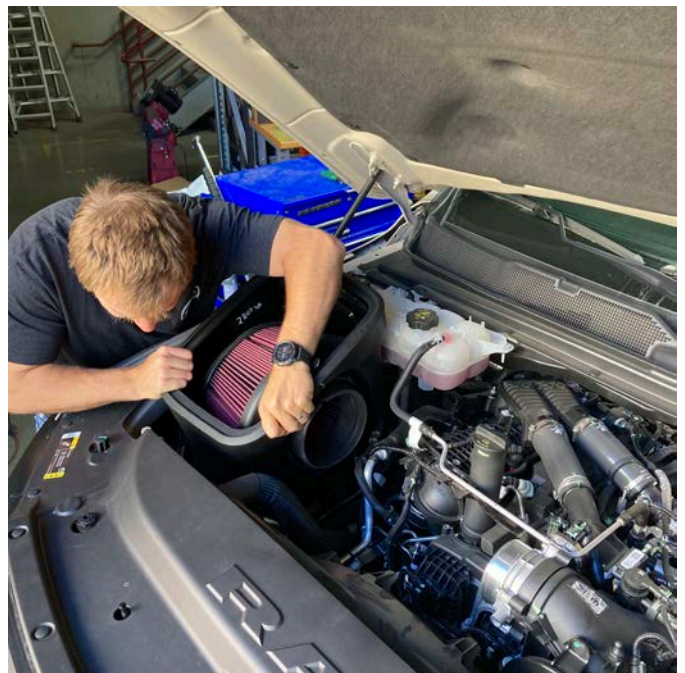
### STEP 18:

Install the **four** grommets onto the air box.



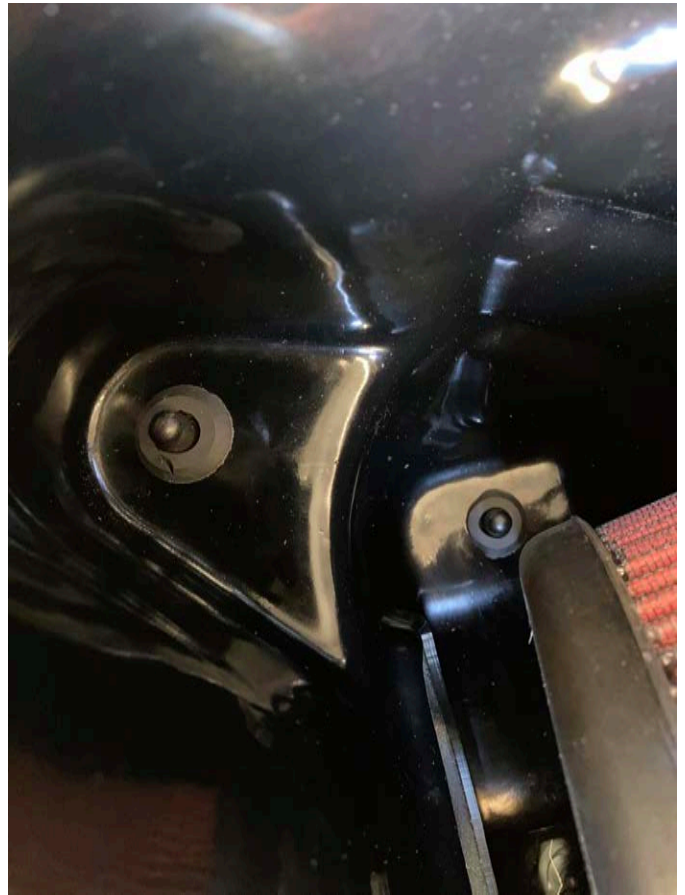
### STEP 19A:

Install the S&B air box onto the 4 mounting posts.



**STEP 19B:**

Once installed, ensure its secure by pushing down on the air box to fully seat it. Then check the corners of the air box to verify it's on the mounting posts.

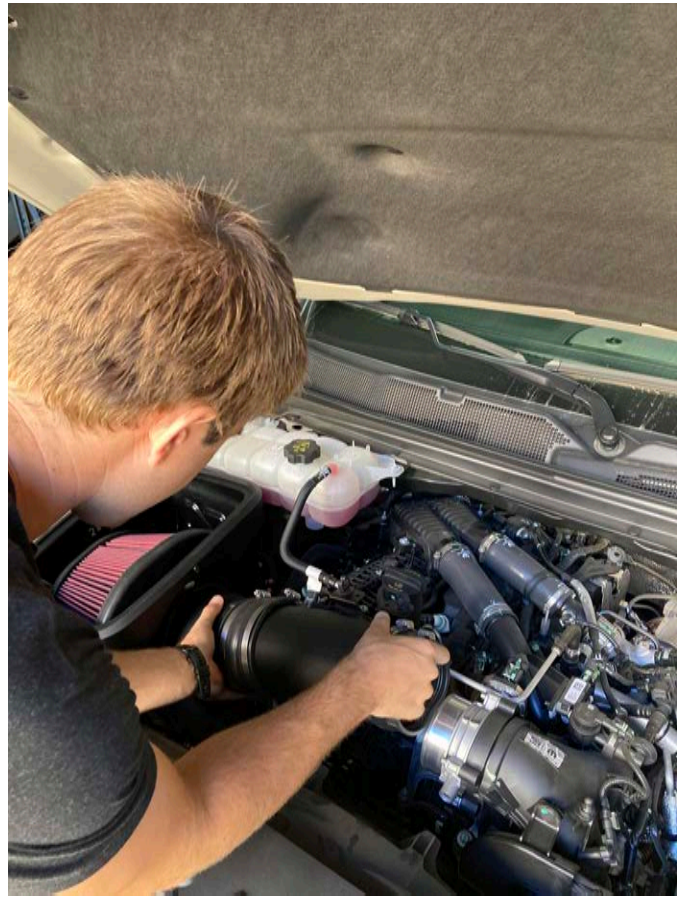
**STEP 20:**

Install the couplers onto the S&B intake tube along with their associated hose clamps.



**STEP 21:**

Place the large hose clamp onto the filter flange. Then line up the intake tube into the air filter by using the indicators on the intake tube.

**STEP 22:**

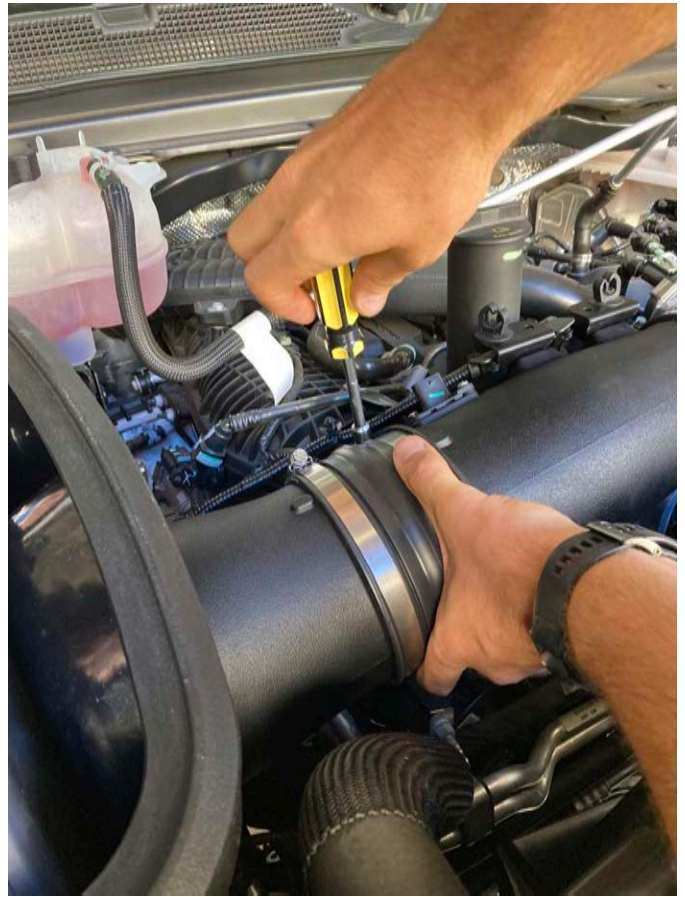
Once the air box side of the intake tube is mounted, now its time to connect the S&B intake tube to the throttle body. Then tighten the two hose clamps holding the tube to the throttle body.



**STEP 23A:**

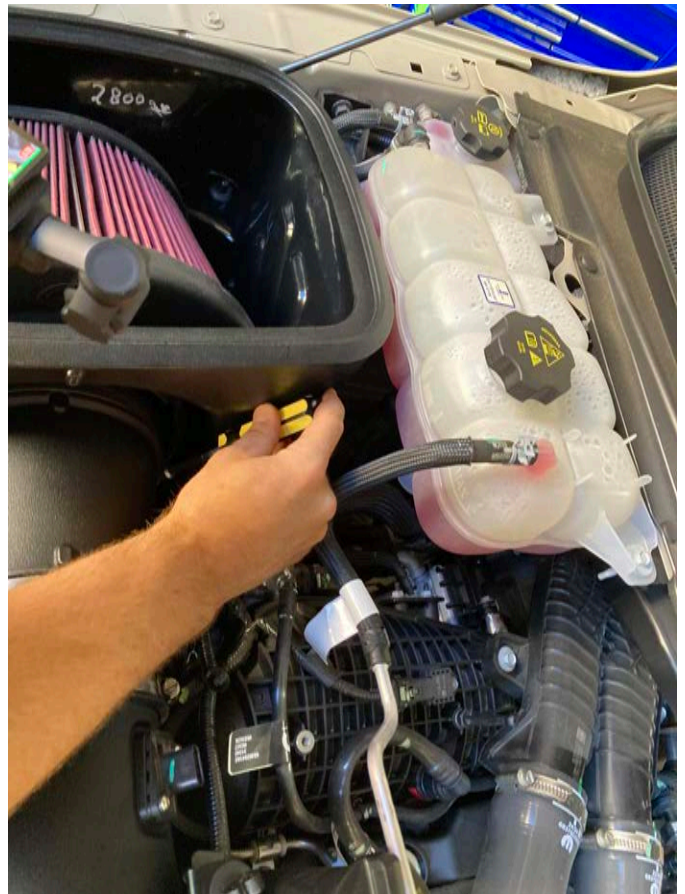
Tighten the two hose clamps on the coupler holding the intake tube to the air filter/air box.

**Tip:** You will need the **5/16** nut driver to tighten the hose clamps.

**23B:**

Tighten the wide diameter hose clamp around the filter flange.

**Tip:** You will need the **5/16** nut driver to tighten the hose clamps.



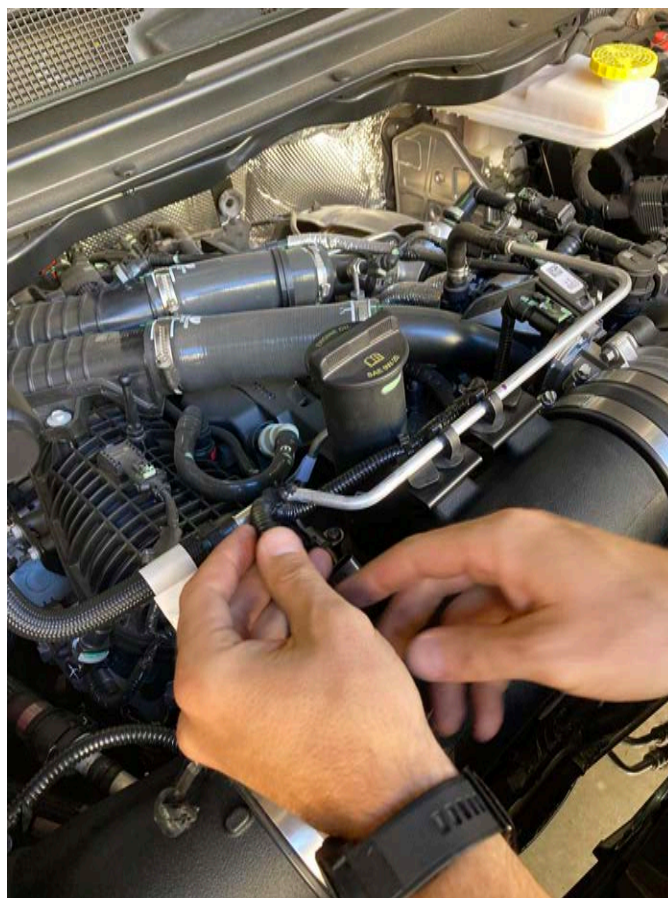
## STEP 24:

If you haven't done so already, put the stock C-clips back onto the brackets, which are located on top of the intake tube.

**Tip:** These can only be installed within the rectangular holes.

Once done, go ahead and install the MAF sensor wire harness clips into the circular holes on said brackets.

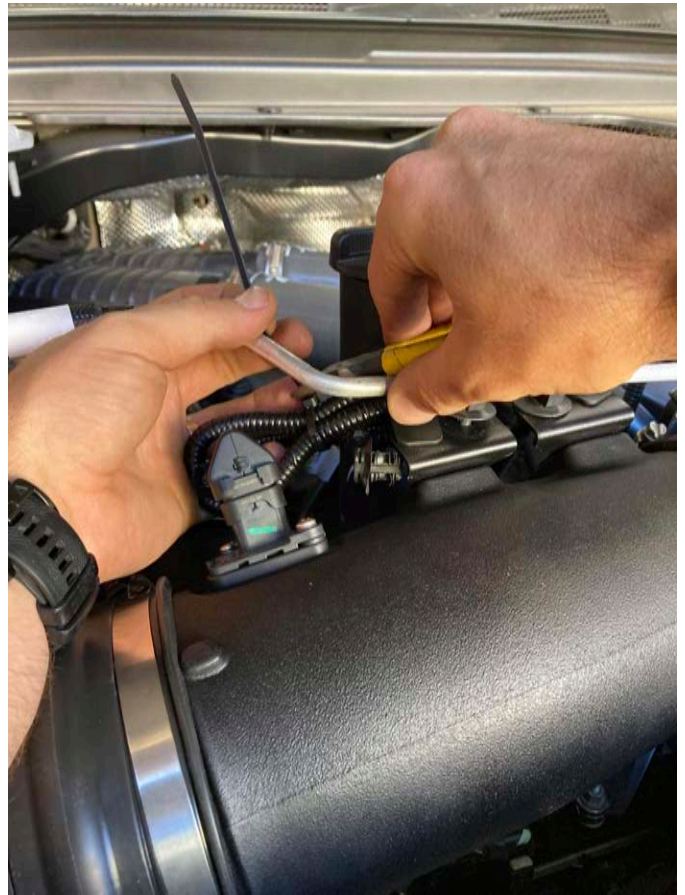
After that, go ahead and re-install the coolant line into those C-clips we mentioned earlier.



**STEP 25:**

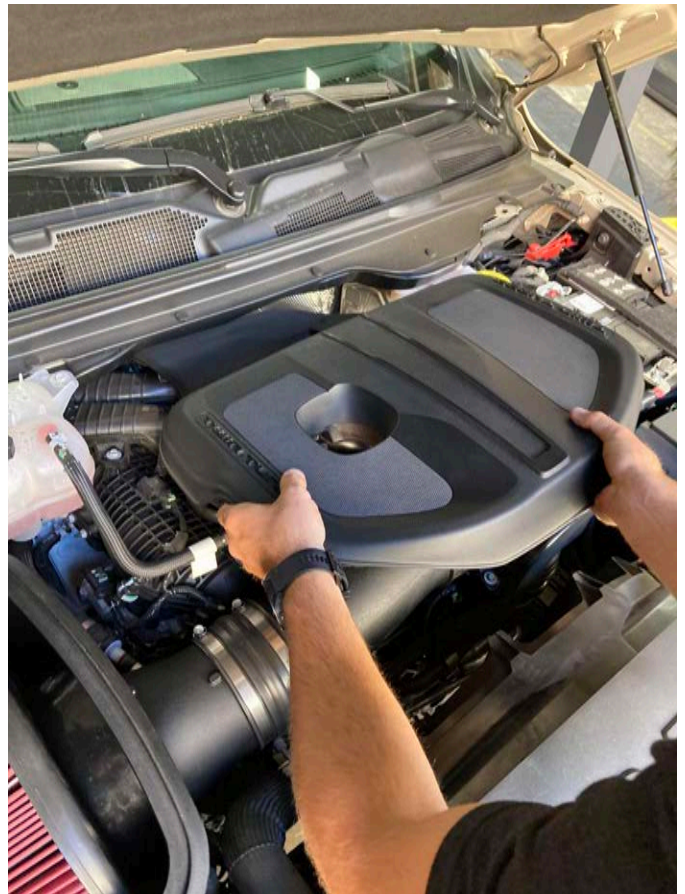
Install the MAF sensor. Once done, you will want to stow the wire harness in a safe place.

Take the included zip ties to tie up the excess wire harness.

**STEP 26:**

Re-install the engine cover. Align the cover onto the grommet in the back by the firewall.

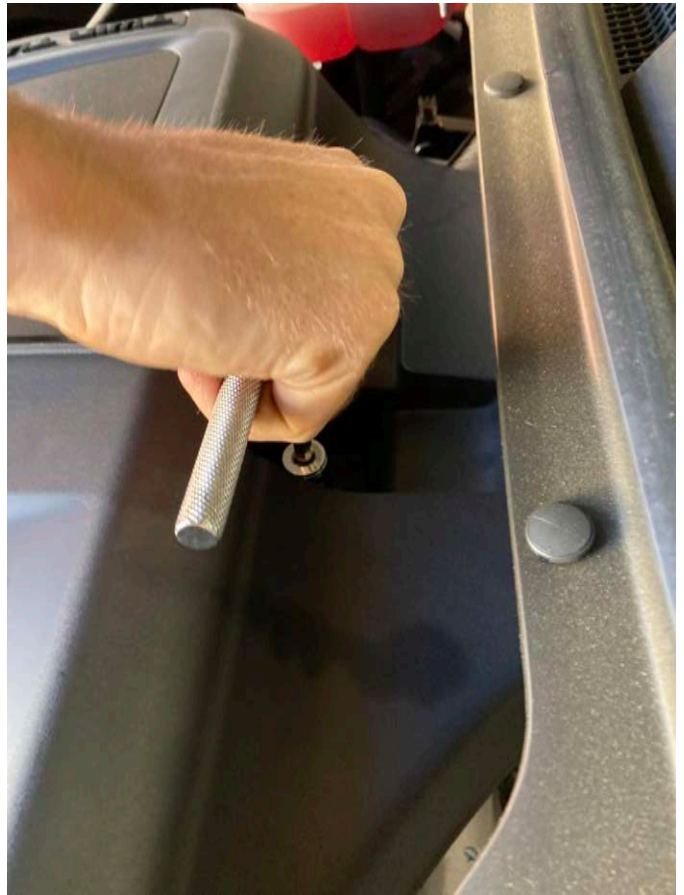
Once done, then align the cover onto the front driver and passenger side mounting posts.



## STEP 27:

Tighten down the bolt on the rear of the engine cover.

**Tip:** You will need a **14mm** socket for this.



## STEP 28:

Remove the protective film from the clear lid, then install it within the lid seal.



## STEP 29:

Install the lid onto the S&B air box.



## STEP 30:

Your installation is now **complete**.

[Remember to reconnect the negative battery cable onto the negative terminal.](#)

Lastly, please **verify all connection points are secure**.

Have any questions? Feel free to call our customer support team at **(909) 947-0015** **CALL US - (909) 947-0015**



## SUPPORT

---

[CALL US - \(909\) 947-0015](#)

[MILLION MILE WARRANTY](#)

[YOUR VEHICLE'S WARRANTY](#)

[UPGRADE GUARANTEE](#)

[SHIPPING & RETURNS](#)

[SAFETY DATA SHEETS](#)

[YOUR PRIVACY CHOICES](#) 

## ABOUT US

---

[WHY S&B](#)

[FIND A DEALER](#)

[BLOG](#)

[UNILATERAL PRICING POLICY](#)

[LET S&B USE YOUR VEHICLE](#)

[BECOME A DEALER](#)

[ISO 5011 TESTING](#)

[DEALER LOGIN](#)

